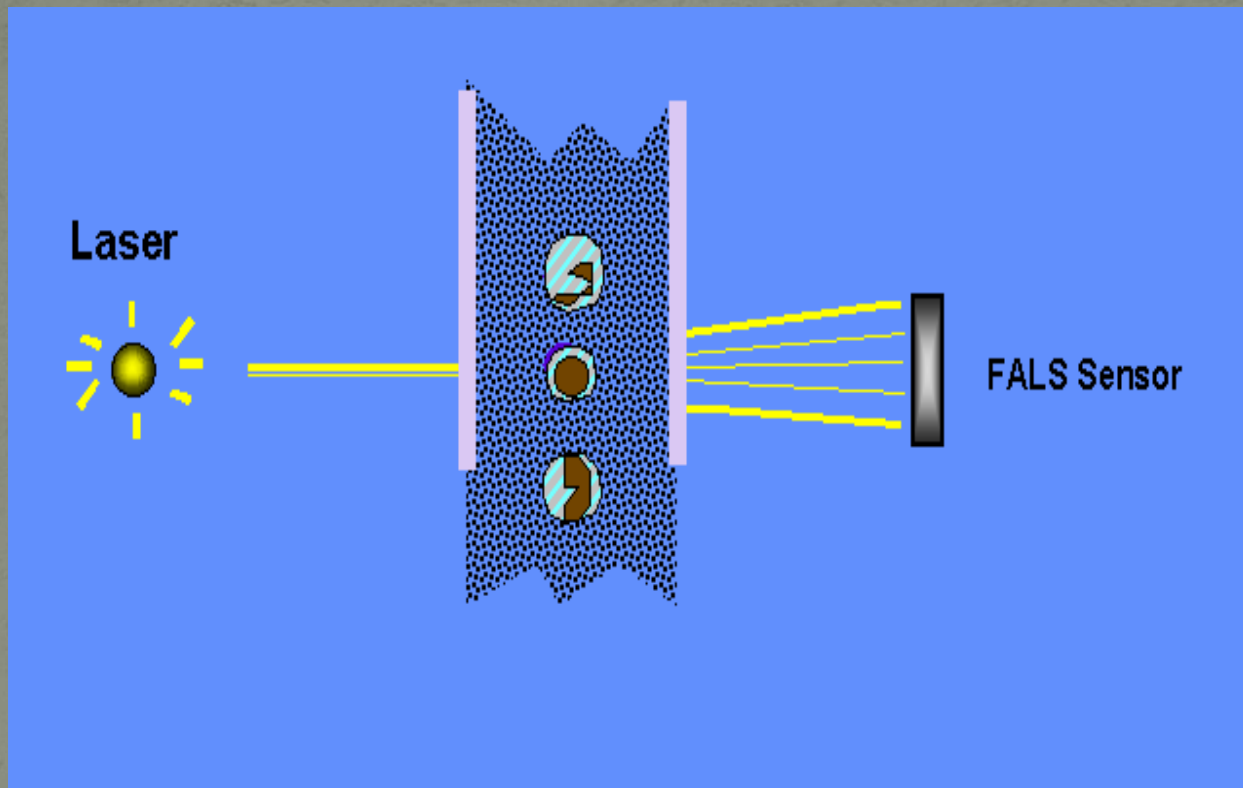


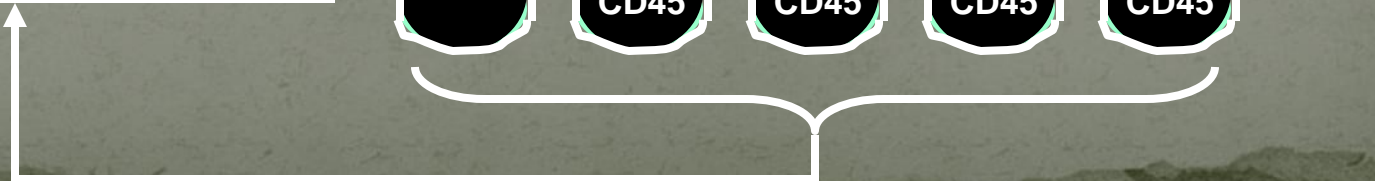
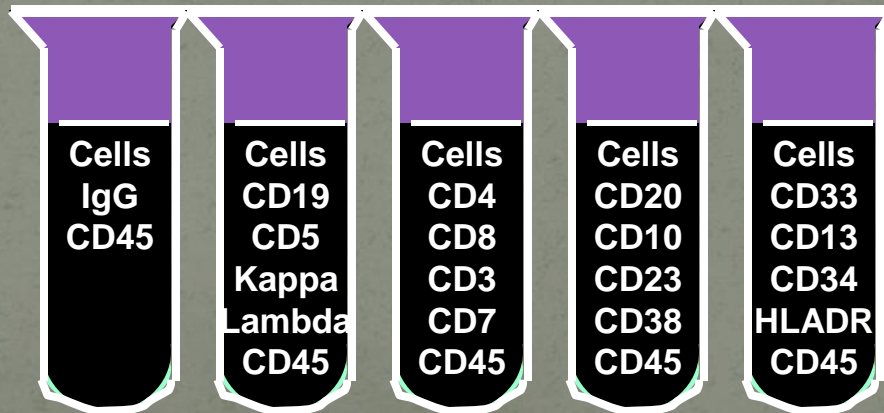
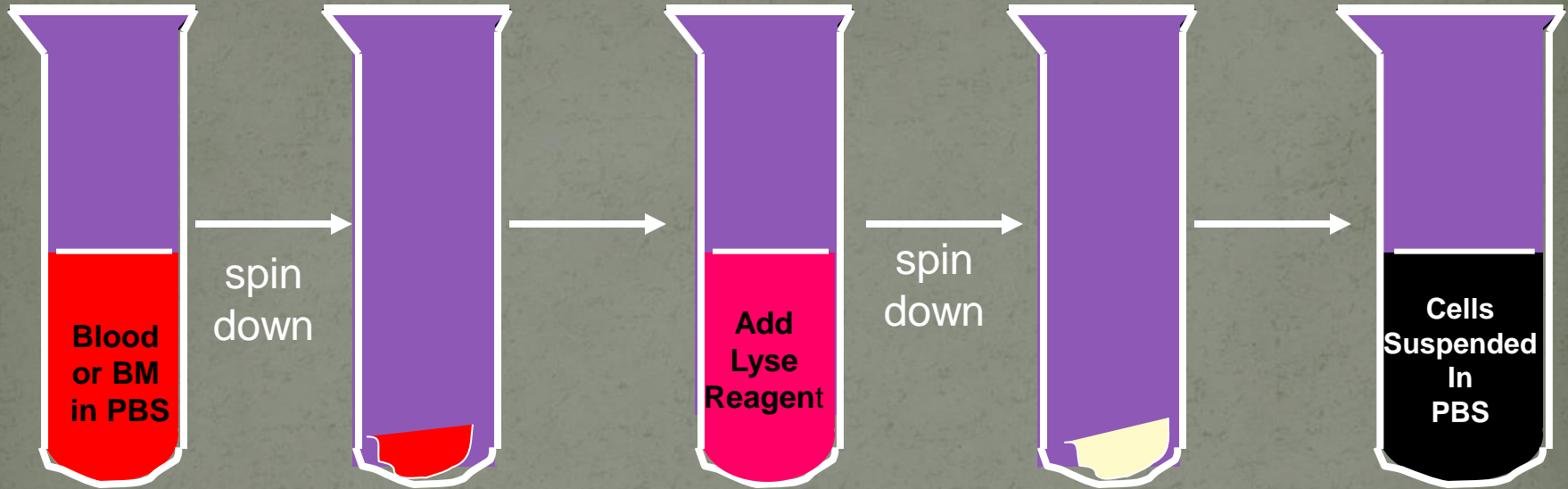
# Flow cytometry

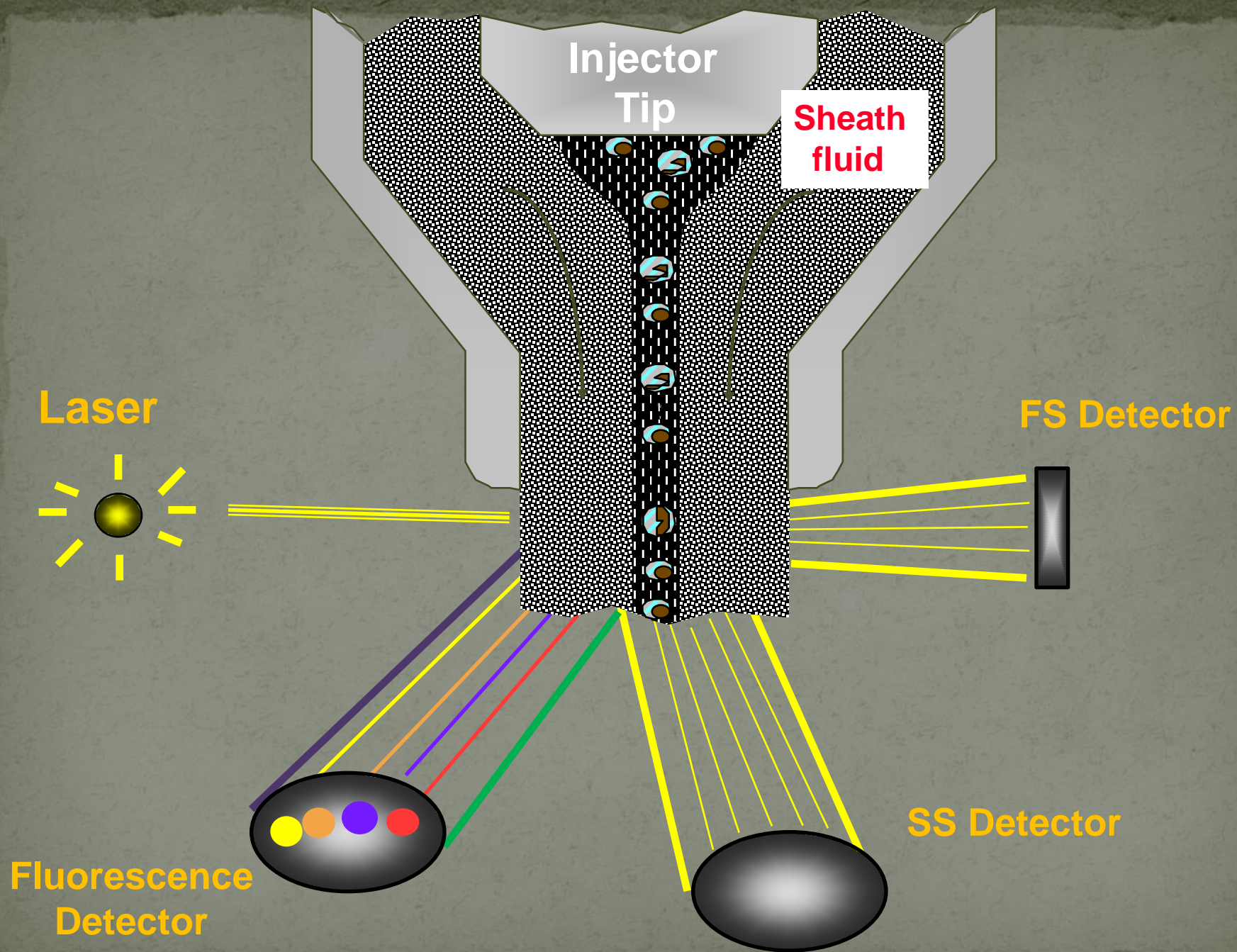
## What is flow cytometry?

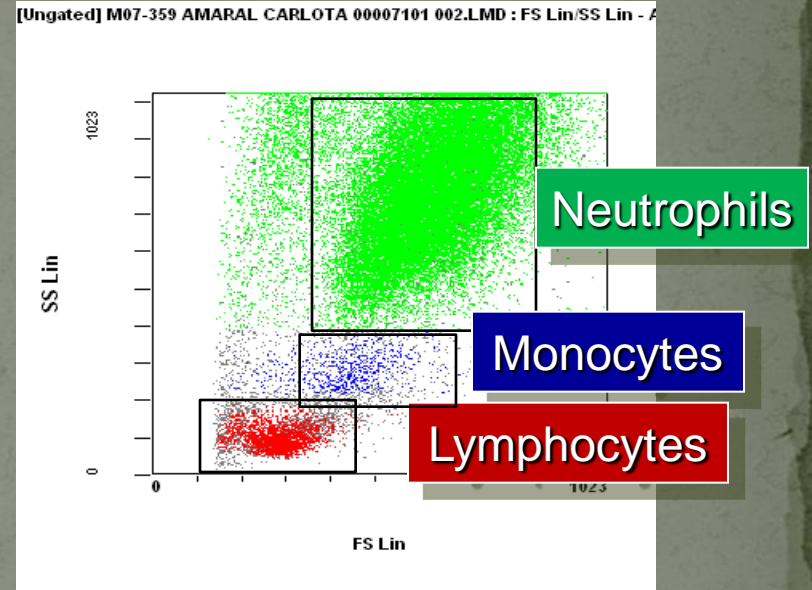
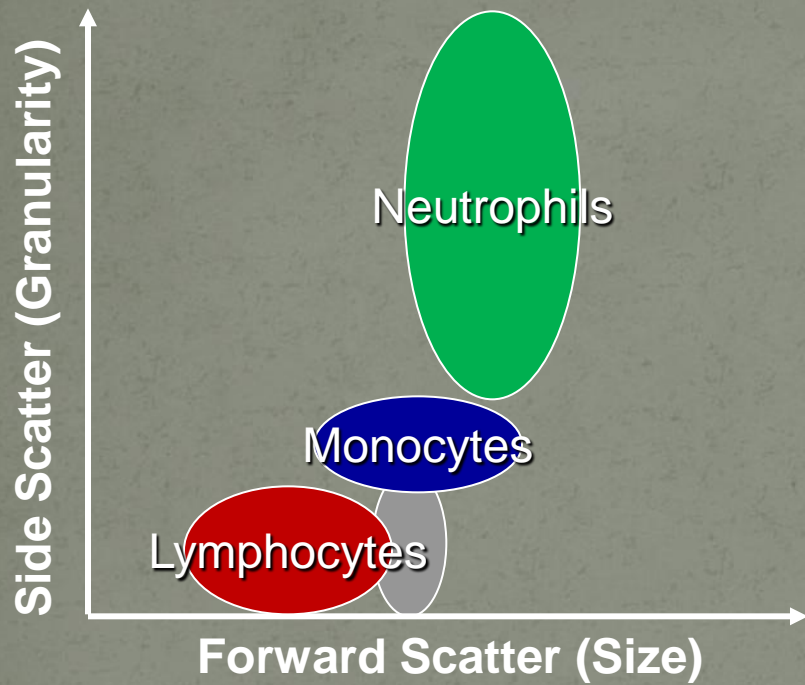
It is cell (**cyto**)-measurement (**-metry**) as the cells move in a stream (**flow**) past a set of stationary detectors

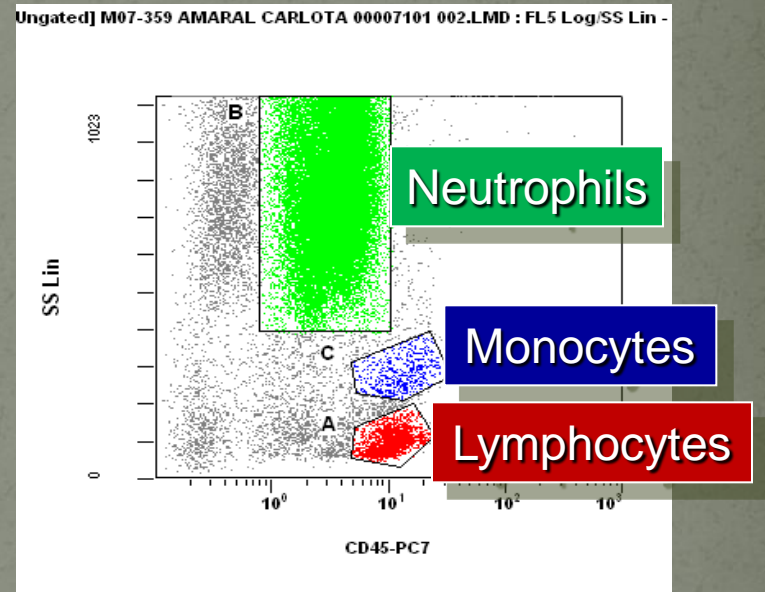
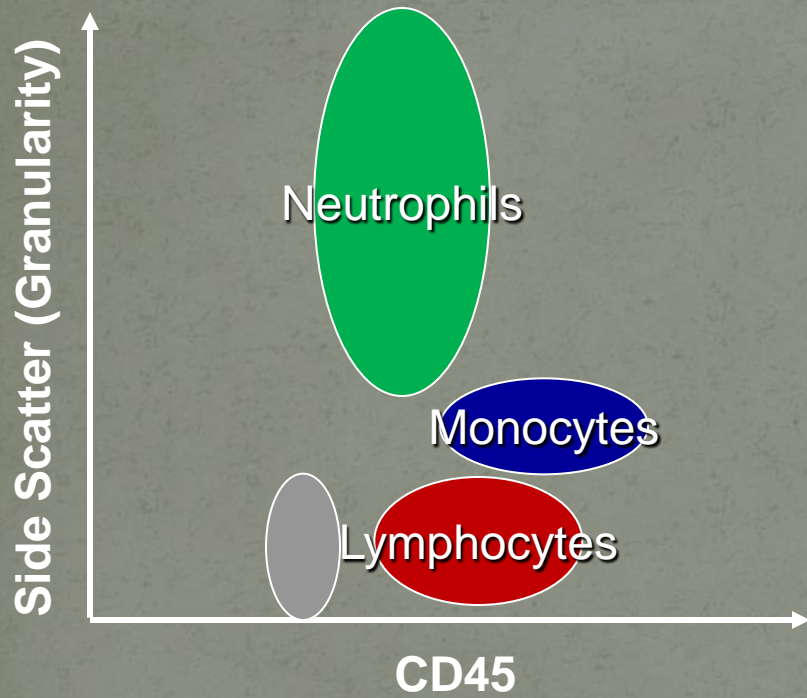


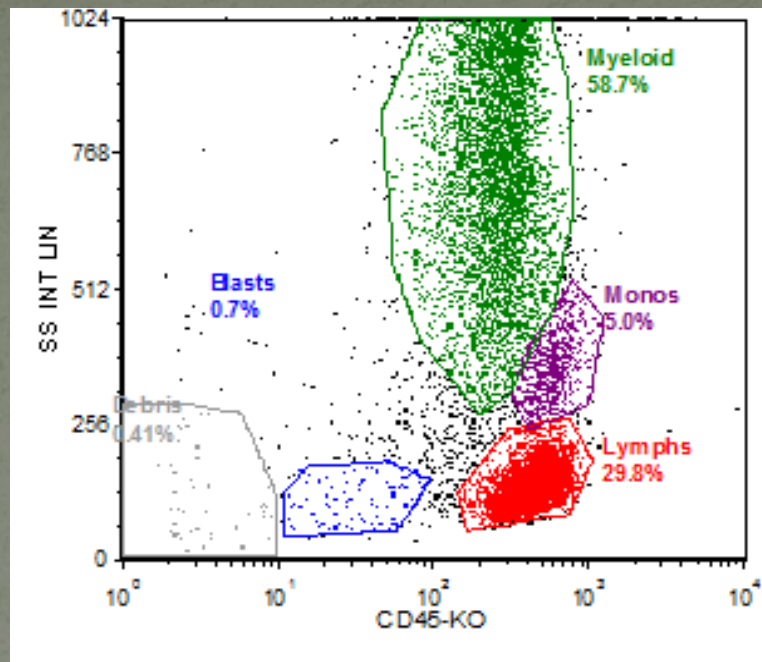
# Procedure of Flow Cytometry



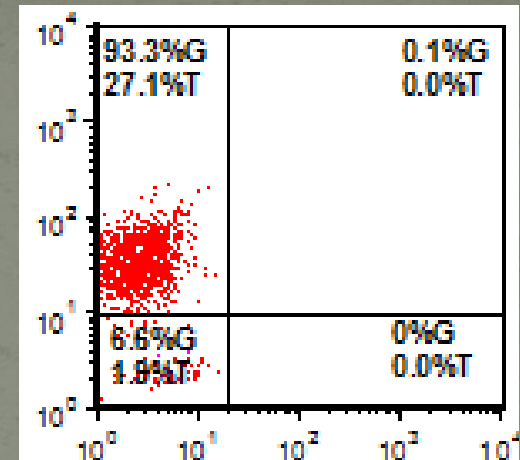






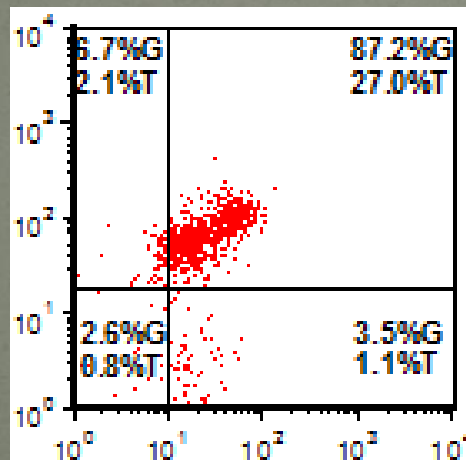


CD5



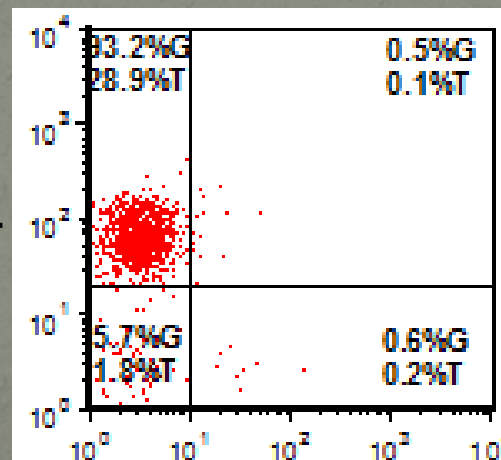
CD19

CD3



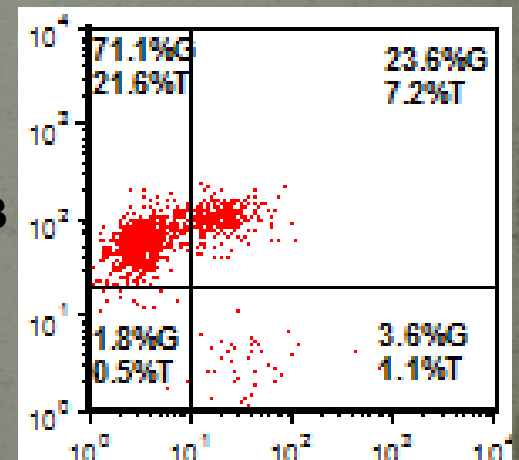
CD2

CD4

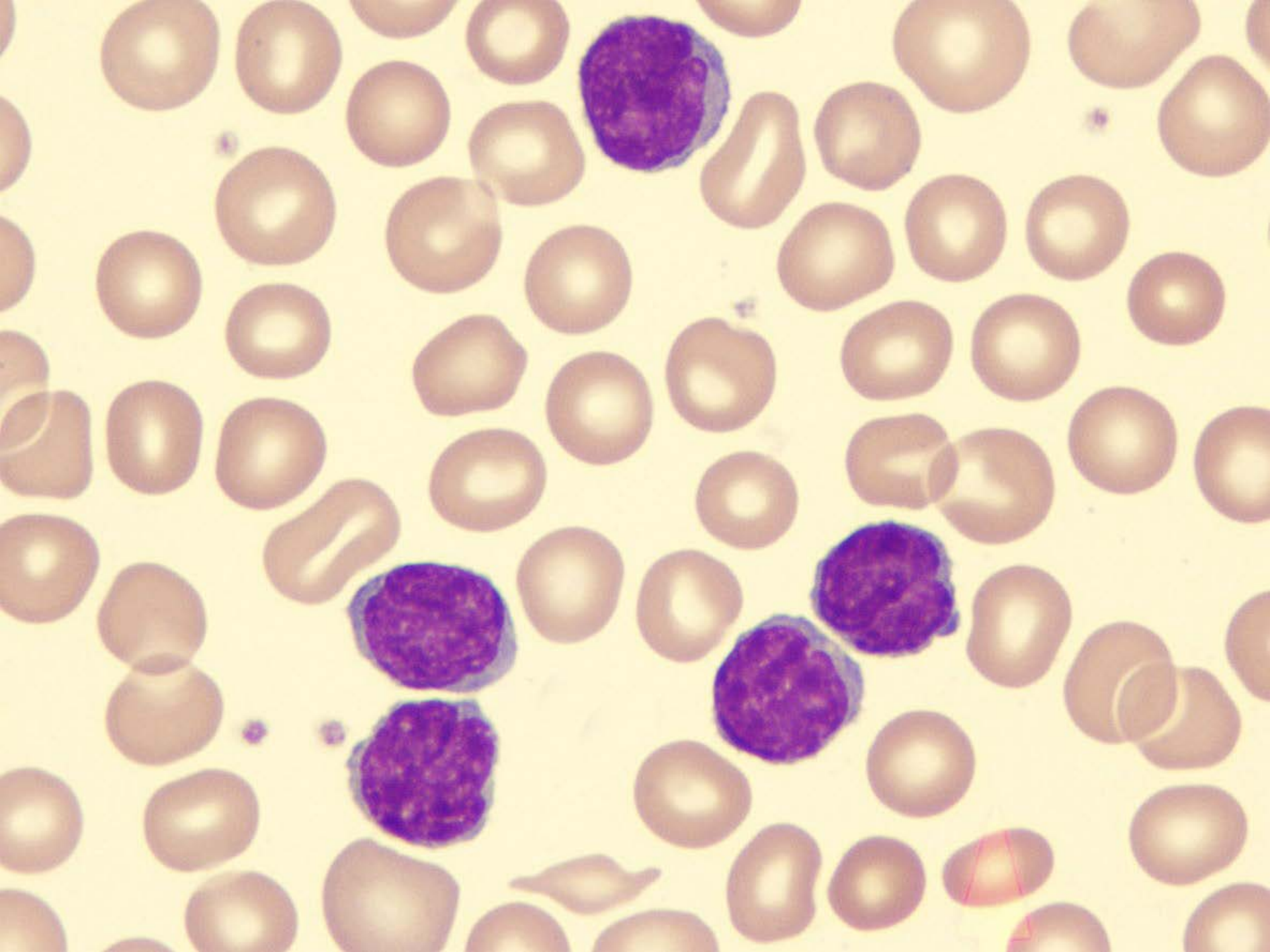


CD8

CD3



CD7





# Lymphoma Flow Immunophenotype

**CD45+**

Loss or aberrant expression of one or more of the T-cell antigens

**T-cell lymphoma**

**CD3+, CD2+, CD5,  
CD7, CD4, CD8**

**T-cell process**

**CD20+, CD19+, CD79a+  
Kappa or Lambda restricted**

**B-cell lymphoma**

**CD2+, CD7+, CD16+  
CD56+  
NK cells**

**CD5+**

**CD10+**

**CD5- &  
CD10-**

**CD23+, dim CD20  
& light chain**

**Small lymphocytic  
lymphoma**

**CD23-,  
FMC7+,  
bright CD20**

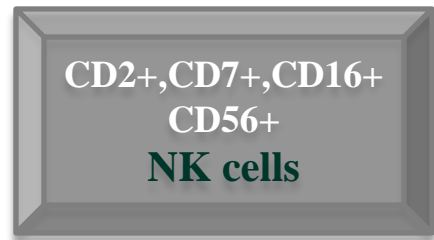
**Mantle cell lymphoma  
Subset of DLBCL**

**Follicular lymphoma  
Burkitt's lymphoma  
Diffuse large B-cell lymphoma**

**CD25-,  
CD103-**

**Marginal zone lymphoma  
Prolymphocytic leukemia**

**CD25+,  
CD103+ &  
morphology  
Hairy cell leukemia**



*Thank You*