

Lymph Node and Ancillary Studies

Sherif Rezk, M.D.

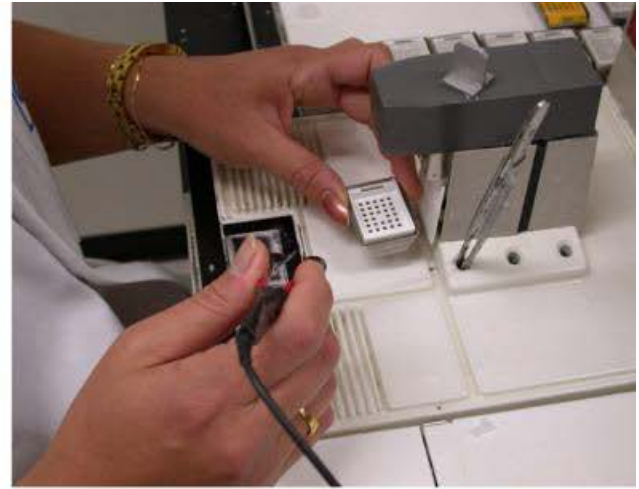
*Associate Professor of Clinical Pathology
Hematopathology
University of California, Irvine*

Objectives

- How does pathology work?
- Lymph node morphology
- Ancillary studies that confirm the diagnosis (Immunohistochemistry & Flow cytometry)

How can you make a diagnosis on tissue obtained from a biopsy?

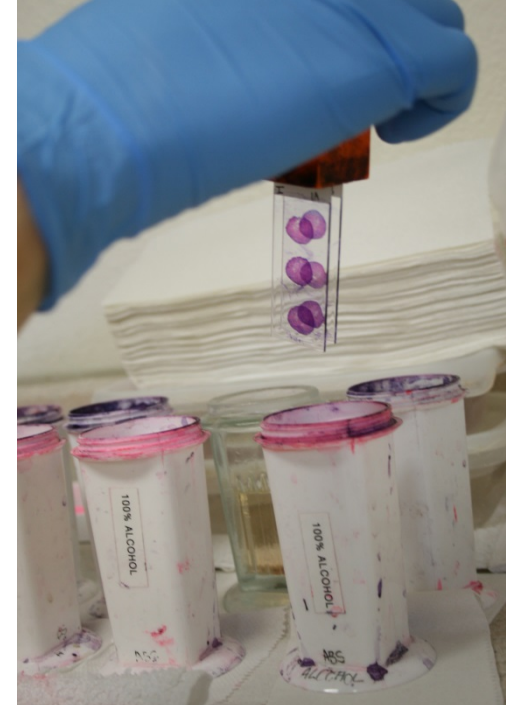






CO07-1258
S07-7804.5

X-tra™



CO07-1258
S07-7804.5

HE



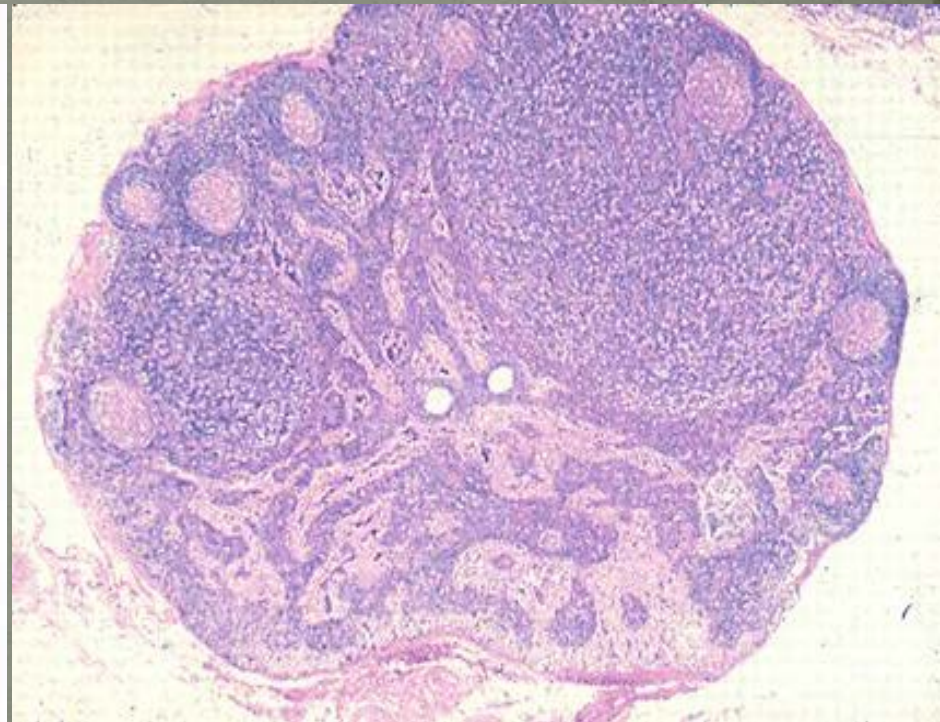
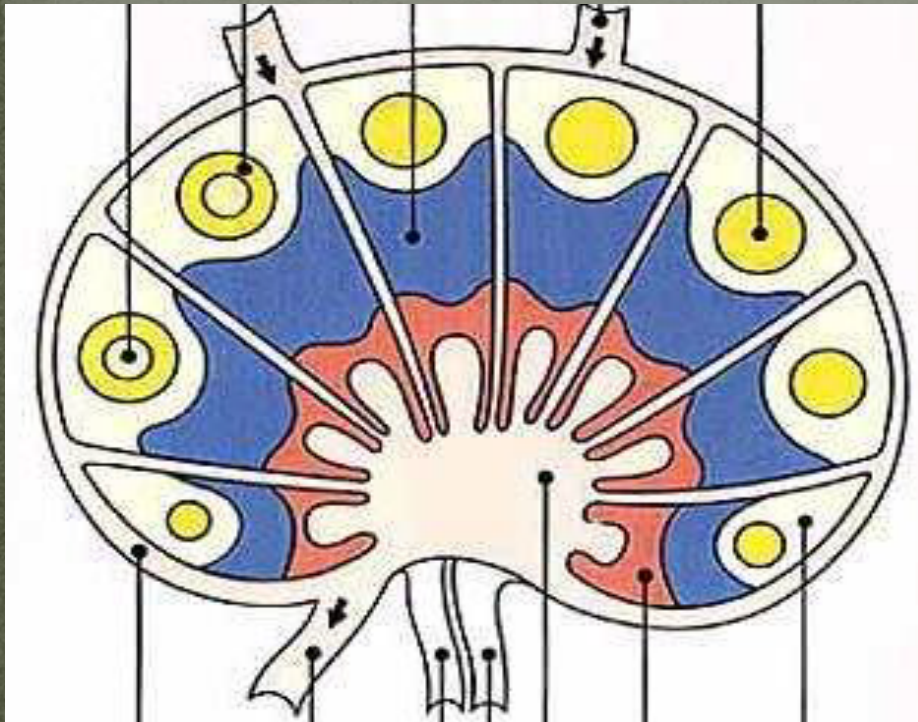
Anatomy of the lymph node

Secondary
follicles

Paracortical
area

Afferent
artery

Primary
follicle



Marginal
sinus

Efferent
vessels

Medullary
sinuses

Medullary
cords

Cortex

